

SOCIETE COOPERATIVE CENTRE BADMINTON

1400 YVERDON-LES-BAINS

AGRANDISSEMENT DE LA HALLE

PROJET

FACADES / COUPE / SITUATION

ECHELLE: 1:200

ATELIER D'ARCHITECTURE HUBER SARL PLAINE 38 1400 YVERDON-LES-BAINS

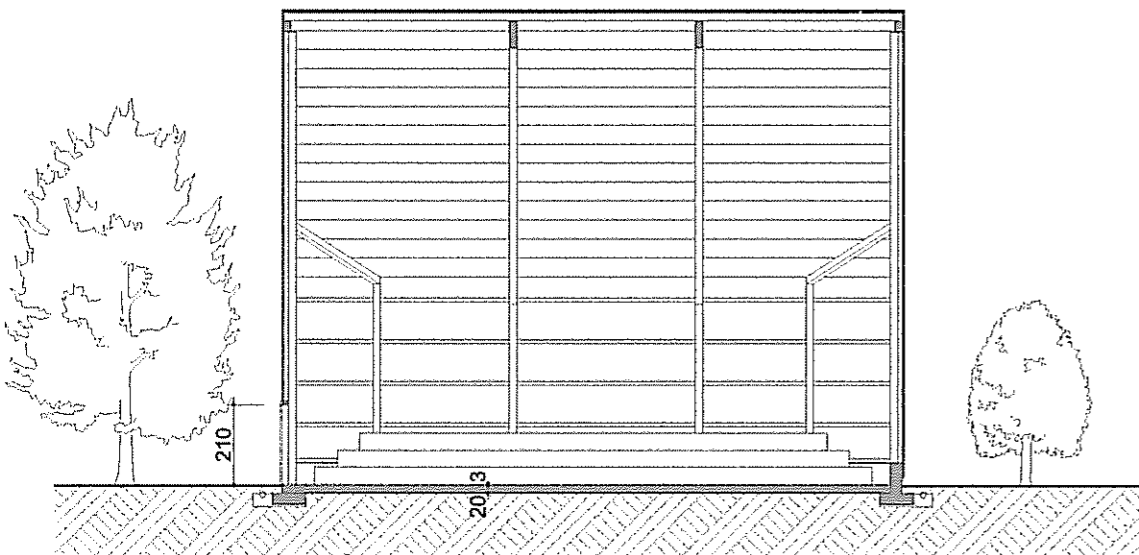
date : 11.12.2007

TEL.: 024/ 425. 25. 26

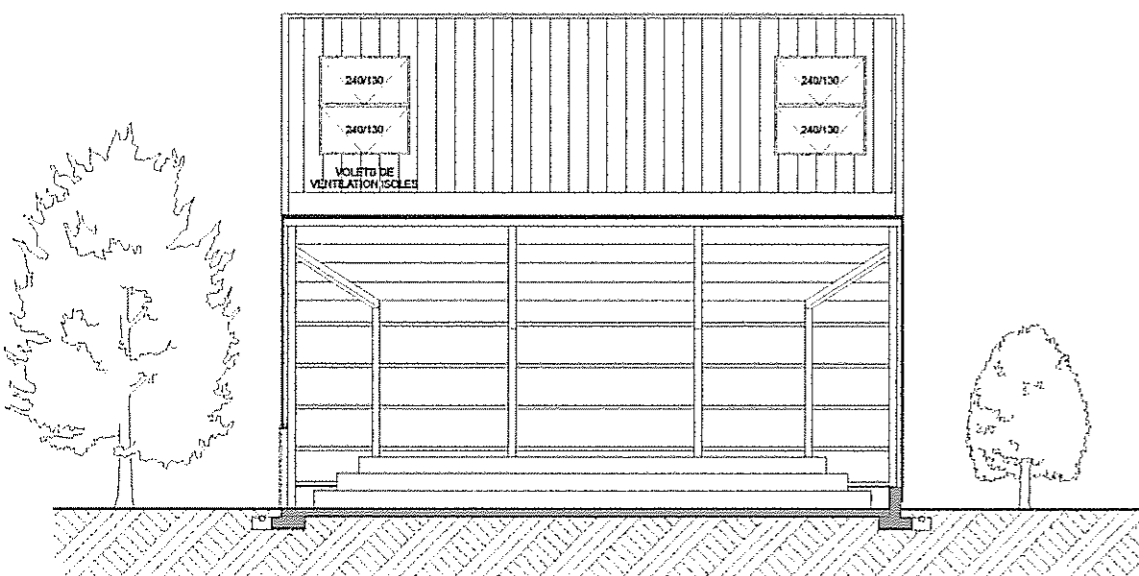
E-MAIL: dessin2@huberarchi.ch

FAX.: 024/ 425. 42. 17

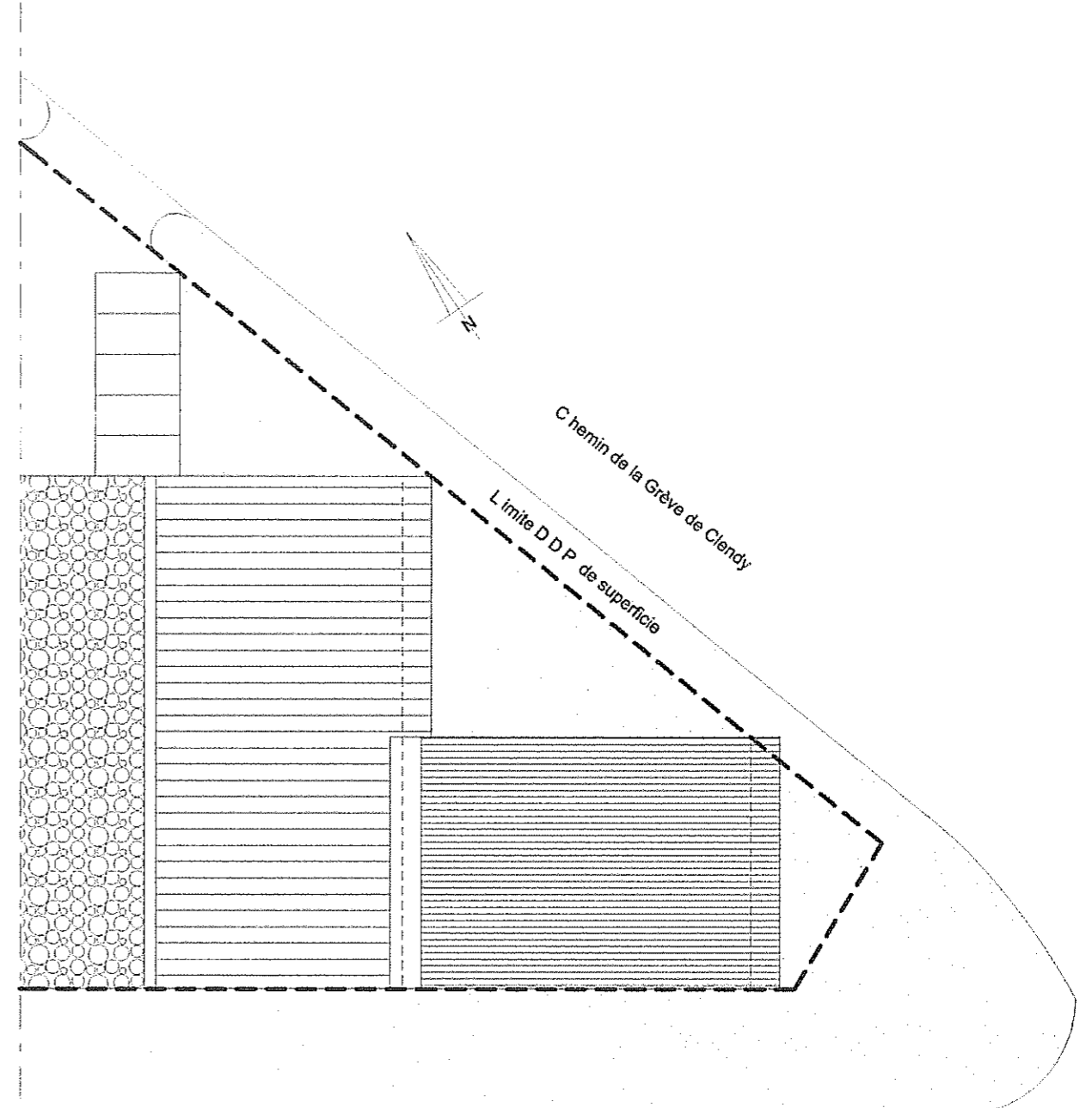
dessin: DN
format: A3



COUPE B-B

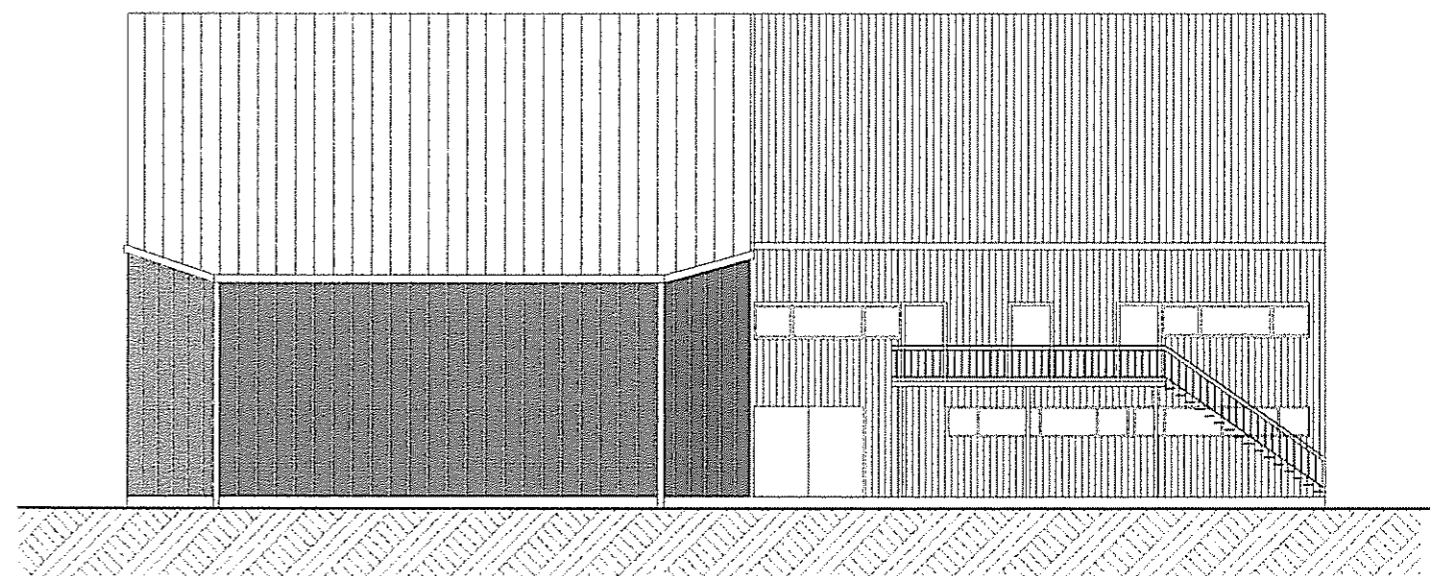


NORD-EST



avenue des sports

AGRANDISSEMENT



SUD-EST